



**Günthermann: »Coupé Gordon Bennet«, c. 1905**  
The largest model of this legendary German tin toy car.  
Length: 12¼ in. (31 cm).  
– **Original working condition!**

# »High-Quality Toys«

May 29, 2010

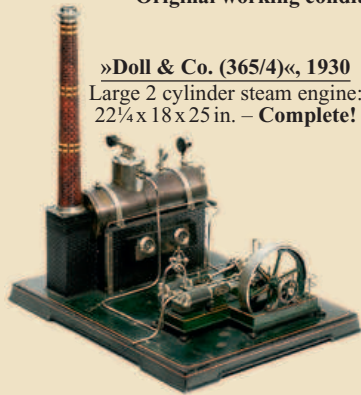


**Bing: »Phaeton (vis-à-vis)«, 1902**  
Largest model (34 cm/13½ in.) –  
6 seater, with horn, automatic steering and  
brake. One lamp only. Exceptional original  
unrestored condition. – **Extremely rare!**

**»Märklin (22.434/5)«, 1906**  
Stationary traction engine.  
– Superb condition! – Complete! –  
A giant rarity!



**Ship Steam Engine**  
**»Carette«, 1905**  
By Georges Carette,  
Nuremberg.  
Size: 11 x 8 x 15 in.  
– **Complete!**



**»Doll & Co. (365/4)«, 1930**  
Large 2 cylinder steam engine:  
22¼ x 18 x 25 in. – **Complete!**



**More than 250 top-quality lots of some of the most complex steam models!**  
**All in full working condition!**



**Live Steam Coal-Fired Showman's Engine**  
Made by „Maxwell Hemmens“, Thorganby,  
York, England. Size: 22 x 8 x 15¼ in.  
(55.5 x 20 x 40 cm) – **Excellent condition!**



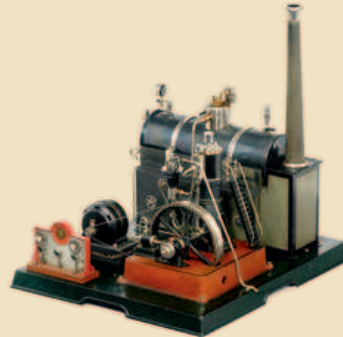
**»Märklin (4112/14/94)«, 1919**  
Size: 16½ x 15 x 20½ in. (42 x 38 x 52 cm)



**Live Steam Boat »Radiguet & Massiot«, 1902**  
French tin toy in excellent original condition.



**Ernst Plank: »Steam Fire Fighting Vehicle«, c. 1895**  
Size: 16¾ x 5 x 13 in.  
(42.5 x 12.5 x 33 cm)



**»Märklin (4147/94)«, 1919**  
Marine steam engine. Size: 21 x 18 in.  
– **A fantastic collector's item!**



**Allchin Traction Engine »Royal Chester«**  
English single cylinder traction engine (1:8), well-  
engineered 1½ in. scale model. Made to plans  
by W. J. Hughes. Overall length: 26 in. (66 cm). –  
**A spectacular collector's item and exhibition piece.**

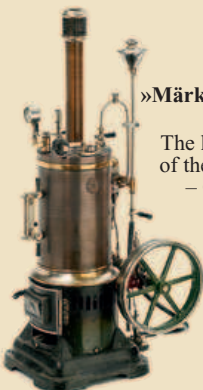
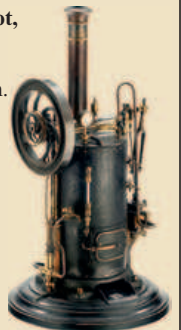


**Steam Tractor »G. Carette (No. 692)«, 1906**  
Overall size: 10¼ x 6 x 11 in. (26 x 15 x 27.5 cm)



**»Märklin (402)«, 1919**  
Convertible steam engine. Size:  
10¼ x 5½ x 93/5 in. (26 x 14 x 24.5 cm)

**»Radiguet & Massiot,  
Paris«, c. 1900**  
Coal-fired. Size:  
10¼ x 10¼ x 187/8 in.  
(26 x 26 x 48 cm). –  
**A very impressive  
early model!**



**»Märklin (4122/11)«, 1919**  
The largest model  
of the 4122 series.  
– **Complete!**

**Fully illustrated bilingual (Engl.-German) COLOUR Catalogue available  
against prepayment of 28.– Euro (Europe) or 39.– Euro (approx. US\$ 55.– / Overseas) only**

# AUCTION TEAM BREKER

– **The Specialists for »Technical Antiques«** –

P. O. Box 50 11 19, 50971 Koeln/Germany · Tel.: +49 / 2236 / 38 43 40 · Fax: +49 / 2236 / 38 43 40  
Otto-Hahn-Str. 10, 50997 Koeln (Godorf)/Germany · e-mail: Auction@Breker.com · www.breker.com · Business Hours: Tue – Fri 9 am – 5 pm

**PLEASE FEEL FREE TO CONTACT OUR INTERNATIONAL REPRESENTATIVES:**

**U.S.A.:** Lee Richmond, 'The Best Things', Tel. (703) 796-5544 \* Fax (703) 766-0966 \* BREKER@TheBestThings.com · **France:** Pierre J. Bickart, Tel. (01) 43 33 86 71 \* AuctionTeamKoln@aol.com  
**England:** Tel. 07779-637317 \* Brian Chesters, Tel. 07970-923 301 \* g4nxw@hotmail.co.uk · **Australia & New Zealand:** Dieter Bardenheier, NZ, Tel./Fax -/64/(09) 817-7268 \* dbarden@orcon.net.nz  
**Japan:** Murakami Taizo, Tel./Fax (06) 6845-8628 \* murakami@ops.dti.ne.jp · **China:** Jiang Feng, Tel. (China): 0086-1386-2062075, (Deutschland): 0179-484 5391, jiangfengde@gmail.com  
**Russia:** Russian Antique Inc., Tel. +7 812 438 1525 \* Tel. +7 495 542 4061, PR@antiq.info (catalogues), Polyguide Ltd. Moscow, Tel. (925) 740-66-03, Tel/Fax (985) 999-93-55,  
ml.mediaservice@gmail.com (Buy & sell of auction goods)